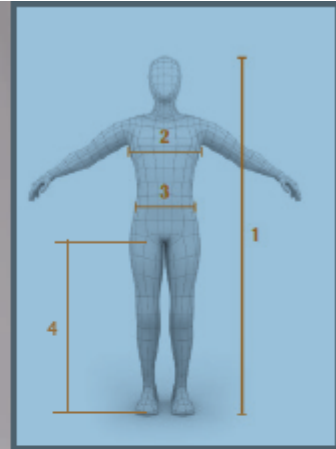


KAPRIOL SIZING GUIDE



MALE SIZING

	S		M		L		XL		XXL		XXXL		4XL	
	CM	INCH	CM	INCH	CM	INCH	CM	INCH	CM	INCH	CM	INCH	CM	INCH
1 HEIGHT	173-176	5'9"-5'10"	176-179	5'10"-5'11"	179-182	5'11"-6'	182-185	5'11"-6'	185-188	6'-6"2"	188-191	6;2"-6'3"	191-194	6'3"-6'4"
2 CHEST SIZE	98-102	39-41"	102-106	41-42.5"	106-110	42.5-44"	110-116	44-46.5"	116-122	46.5-49"	122-128	49-51"	128-134	51-53.5"
3 WAIST	82-86	32-34"	86-90	34.-35.5"	90-94	35.5-37"	94-100	37-39"	100-106	39-42"	106-112	42-44"	112-118	44-46.5"
4 INSIDE LEG	80	31	81	32	82	32	83	32.5	84	33	85	33.5	86	34

FEMALE SIZING

	XS (8-10)		S (10-12)		M (12-14)		L (14)	
	CM	INCH	CM	INCH	CM	INCH	CM	INCH
1 HEIGHT	162-165	5'4"-5'5"	165-168	5'9"-5'10"	168-171	5'10"-5'11"	171-175	5'11"-6'
2 CHEST SIZE	86-90	34-35.5"	90-94	35.5-37"	94-98	37-38.5"	98-102	38.5-40"
3 WAIST	64-68	25-27"	68-72	27-28"	72-76	28-30"	76-80	30-31.5"

FIT

SLIM FIT



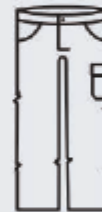
The leg is more form-fitting, reducing the width of the knee and cuff and limiting the length to obtain a more shapely look. Excellent freedom of movement is still guaranteed thanks to the shape of the crotch and knee.

REGULAR FIT



This is the standard Kapriol fit, suited for every type of use. The shaped crotch prevents trousers from lowering when bending and the looser fit on the leg promotes maximum freedom

RELAXED FIT



Higher volume is provided in the hips, thighs, knee and ankle to obtain a straighter leg, suited for work that requires maximum movement. The improved ventilation, make them ideal for summer.